

Data recording with Digalox® DPM72

Procedure:

The measurement values can be read or continuously broadcast through the USB-port of the DPM72. The USB-Port uses the CDC-standard (Communication Device Class) and shows up as a virtual COM port on your PC.

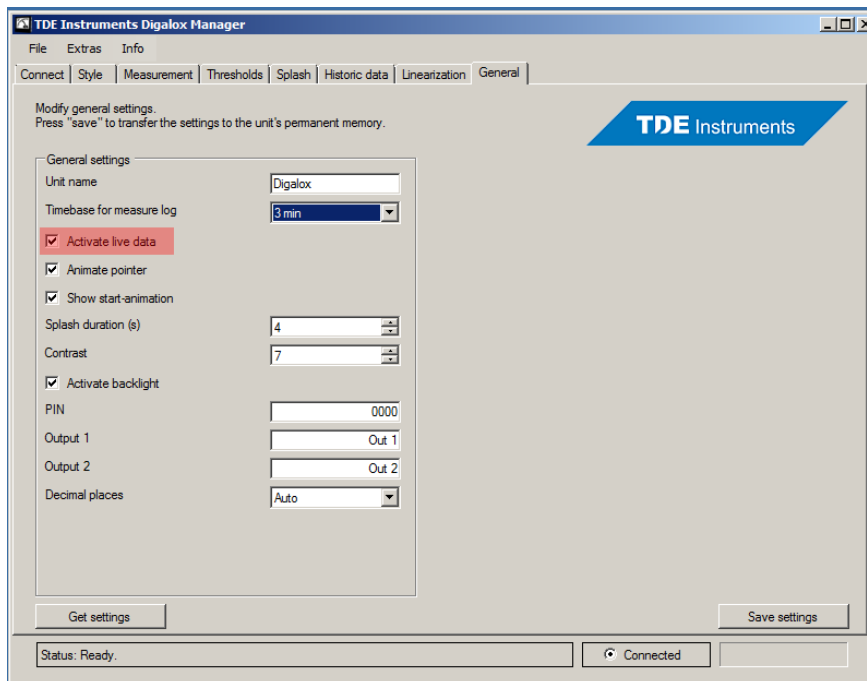
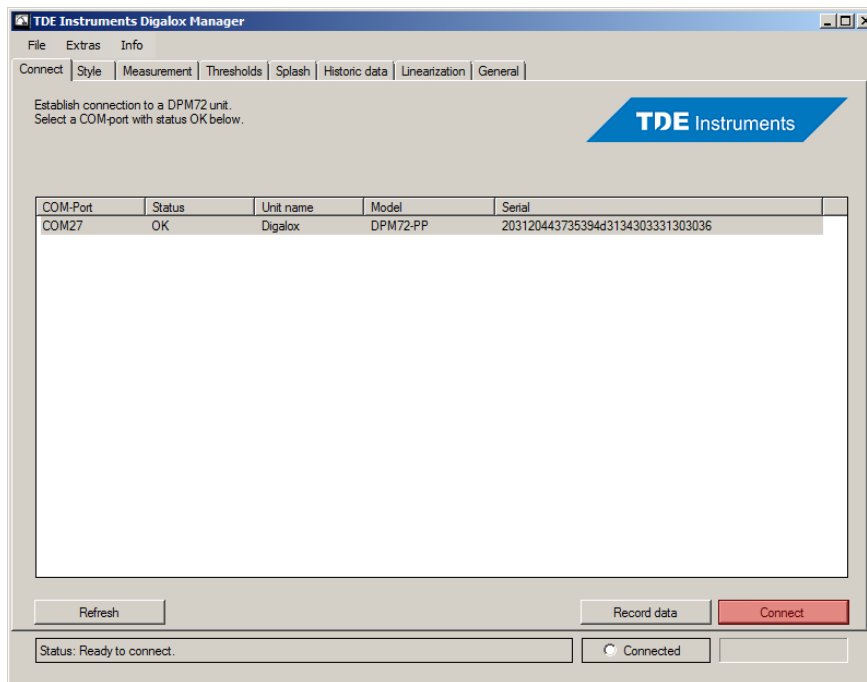
The Values can be read out in three ways:

1. Record with “Digalox® Manager” as CSV-file
2. Continuous value transfer as text
3. Query of single values as text

1. Record with “Digalox® Manager” as CSV-file

Step by step procedure:

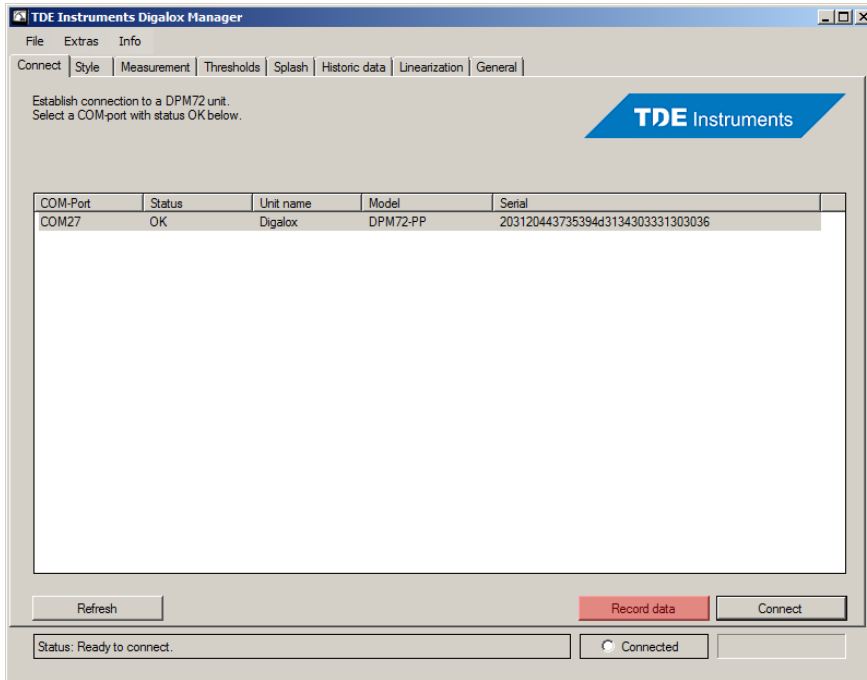
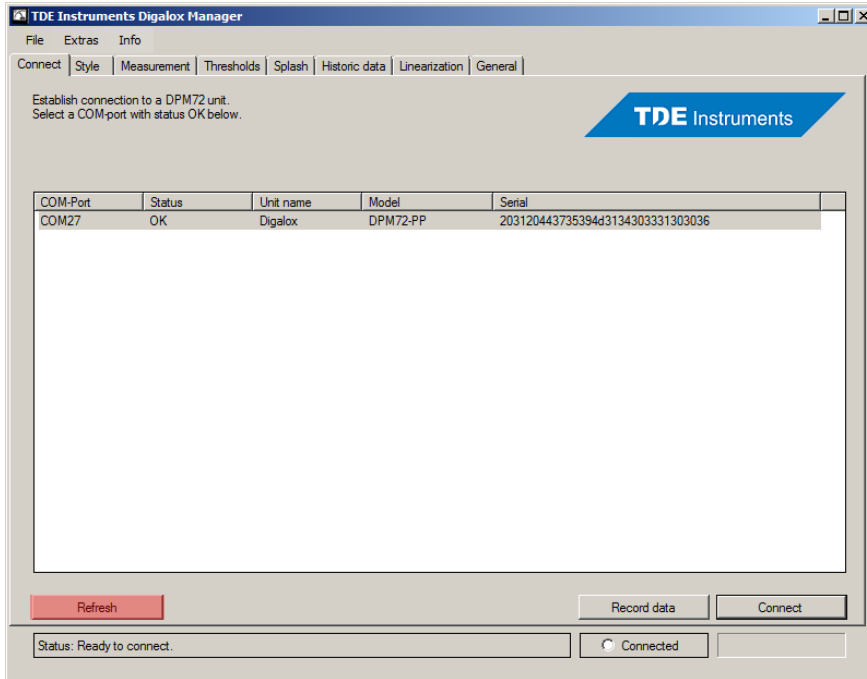
- Connect the DPM72 with a Windows-PC
- Connect the “Digalox® Manager”
- Activation of live data transmission
- Refresh the connection with the “Digalox® Manager”
- Start the recording in the “Digalox® Manager”



TDE Instruments GmbH
 Post address: P.O. Box 1215, 71141 Steinenbronn
 Address: Gewerbestraße 8, 71144 Steinenbronn

Tel.: +49(0)7157-20801
 Fax: +49(0)7157-20813
 Email: info@tde-instruments.de
 Web: www.tde-instruments.de

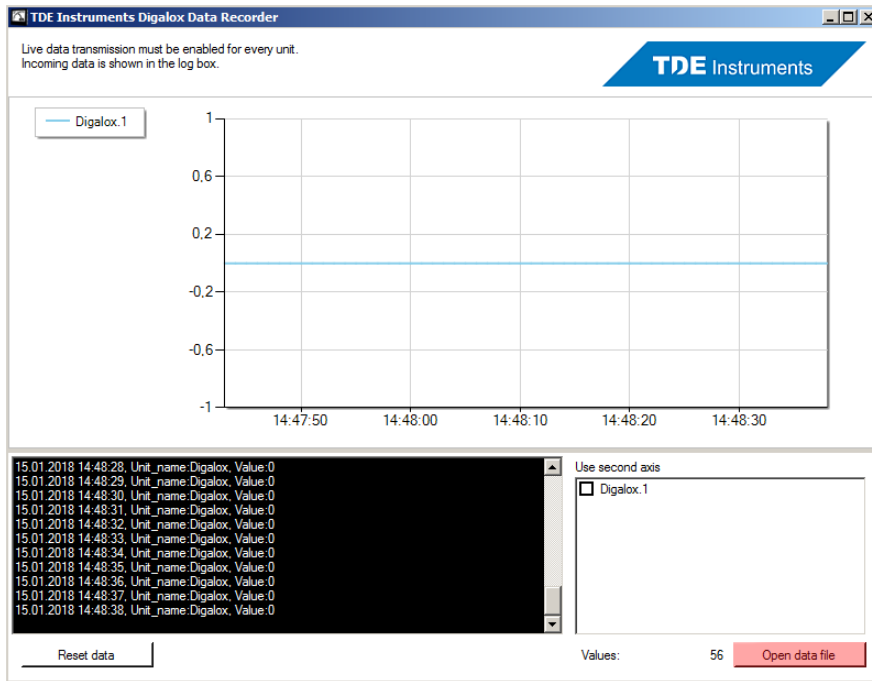
Geschäftsführer: Dipl. Ing. Klaus-Dieter Seidel
 Handelsregister: Registergericht Stuttgart, HRB 737016
 USt.-IdNr.: DE276660300



TDE Instruments GmbH
 Post address: P.O. Box 1215, 71141 Steinenbronn
 Address: Gewerbestraße 8, 71144 Steinenbronn

Tel.: +49(0)7157-20801
 Fax: +49(0)7157-20813
 Email: info@tde-instruments.de
 Web: www.tde-instruments.de

Geschäftsführer: Dipl. Ing. Klaus-Dieter Seidel
 Handelsregister: Registergericht Stuttgart, HRB 737016
 USt.-IdNr.: DE276660300



Dial	Value	Timestamp
Dialox:446;0;-4,7;24.08.2016	0	14:40:51
Dialox:447;0;-4,7;24.08.2016	0	14:40:52
Dialox:448;0;-4,7;24.08.2016	0	14:40:53
Dialox:449;0;-4,7;24.08.2016	0	14:40:54
Dialox:450;0;-4,7;24.08.2016	0	14:40:55
Dialox:451;0;-4,7;24.08.2016	0	14:40:56
Dialox:452;0;-4,7;24.08.2016	0	14:40:57
Dialox:453;0;-4,7;24.08.2016	0	14:40:58
Dialox:454;0;-4,7;24.08.2016	0	14:40:59
Dialox:455;0;-4,7;24.08.2016	0	14:41:00
Dialox:456;0;-4,7;24.08.2016	0	14:41:01
Dialox:457;0;-4,7;24.08.2016	0	14:41:02
Dialox:458;0;-4,7;24.08.2016	0	14:41:03
Dialox:459;0;-4,7;24.08.2016	0	14:41:04
Dialox:460;0;-4,7;24.08.2016	0	14:41:05
Dialox:461;0;-4,7;24.08.2016	0	14:41:06
Dialox:462;0;-4,7;24.08.2016	0	14:41:07
Dialox:463;0;-4,7;24.08.2016	0	14:41:08
Dialox:464;0;-4,7;24.08.2016	0	14:41:09
Dialox:465;0;-4,7;24.08.2016	0	14:41:10
Dialox:466;0;-4,7;24.08.2016	0	14:41:11
Dialox:467;0;-4,7;24.08.2016	0	14:41:12
Dialox:468;0;-4,7;24.08.2016	0	14:41:13
Dialox:469;0;-4,7;24.08.2016	0	14:41:14
Dialox:470;0;-4,7;24.08.2016	0	14:41:15
Dialox:471;0;-4,7;24.08.2016	0	14:41:16
Dialox:472;0;-4,7;24.08.2016	0	14:41:17
Dialox:473;0;-4,7;24.08.2016	0	14:41:18
Dialox:474;0;-4,7;24.08.2016	0	14:41:19
Dialox:475;0;-4,7;24.08.2016	0	14:41:20
Dialox:476;0;-4,7;24.08.2016	0	14:41:21
Dialox:477;0;-4,7;24.08.2016	0	14:41:22
Dialox:478;0;-4,7;24.08.2016	0	14:41:23
Dialox:479;0;-4,7;24.08.2016	0	14:41:24
Dialox:480;0;-4,7;24.08.2016	0	14:41:25
Dialox:481;0;-4,7;24.08.2016	0	14:41:26
Dialox:482;0;-4,7;24.08.2016	0	14:41:27
Dialox:483;0;-4,7;24.08.2016	0	14:41:28
Dialox:484;0;-4,7;24.08.2016	0	14:41:29
Dialox:485;0;-4,7;24.08.2016	0	14:41:30
Dialox:486;0;-4,7;24.08.2016	0	14:41:31

TDE Instruments GmbH
 Post address: P.O. Box 1215, 71141 Steinenbronn
 Address: Gewerbestraße 8, 71144 Steinenbronn

Tel.: +49(0)7157-20801
 Fax: +49(0)7157-20813
 Email: info@tde-instruments.de
 Web: www.tde-instruments.de

Geschäftsführer: Dipl. Ing. Klaus-Dieter Seidel
 Handelsregister: Registergericht Stuttgart, HRB 737016
 USt.-IdNr.: DE276660300

2. Continuous value transfer as text

- Connect the DPM72 with a Windows-PC
- Connect the “Digalox® Manager”
- Activation of live data transmission
- Disconnect the “Digalox® Manager”
- Establish a connection with the COM port:

Connection settings: 19.200 Baud, no parity, 1 Stop bit

- Data format measure values:
value:ID;Checksum;Counter;Measurementmode;Measurementvalue\n
e.g. „value:0;140;1132;0;-4.7\n“
\n equals the value 13

3. Query of single values as text

- Establish a connection with the COM port:

Connection settings: 19.200 Baud, no parity, 1 Stop bit

- Send query: „value?\n“
- Answer data format:
value:ID;Checksum;Counter;Measurementmode;Measurementvalue\n
e.g. „value:0;140;1132;0;-4.7\n“
\n equals the value 13